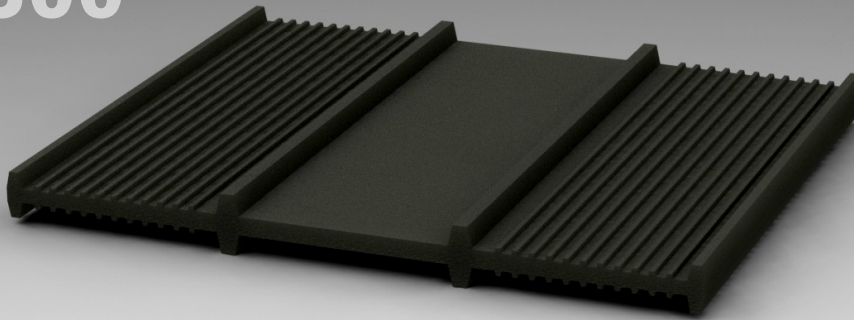


Waterstop Type F300



TYPICAL APPLICATION

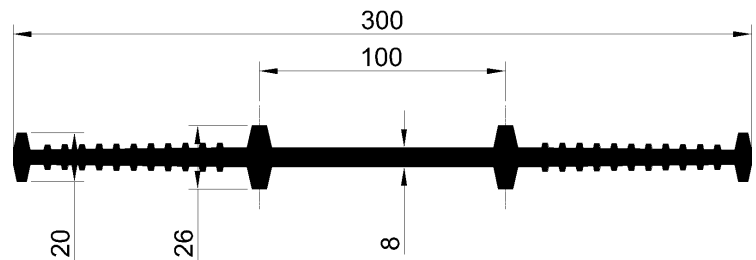
culverts, retaining walls, bridge abutments, foundations, basements, underground construction works, tunnels, aqueducts

Trelleborg F series waterstops are typically used in new build constructions for both movement joints and construction joints in low performance application.

ADVANTAGES

Easy to install, highest performance, movement in all directions possible, bespoke frame design possible.

TECHNICAL PROPERTIES



■ Gross dimensions	250 x 26 mm
■ Weight	3.3 kg/m
■ Materials	SBR
■ Elongation at break	≥ 380%
■ Tensile strength	≥ 10 N/mm ²
■ Hardness	62 ± 5 Shore A
■ Capacity	-

Product specifications and performance may be subject to project specific conditions or local design constraints. For advice on product performance, application and installation, construction possibilities and technical queries contact us.

GET IN TOUCH

Trelleborg Ridderkerk B.V.

Website: [trelleborg.com/marine-and-infrastructure](https://www.trelleborg.com/marine-and-infrastructure)

Email: marine_infra@trelleborg.com

Phone: +31 (0)180 495 555